



**India Meteorological Department
(Ministry of Earth Sciences)**

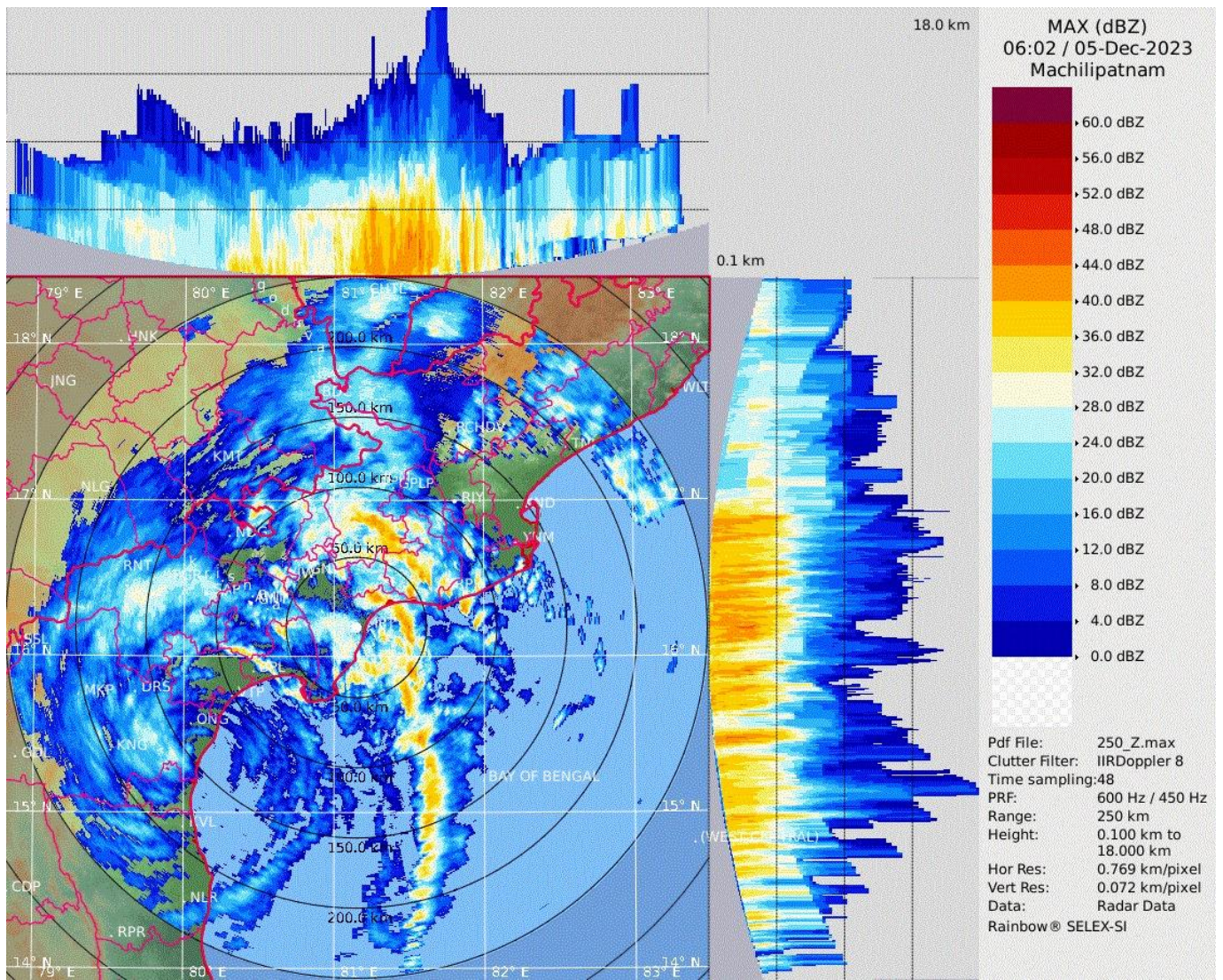
HOURLY UPDATE ON SEVERE CYCLONIC STORM "MICHAUNG"

BULLETIN NO. 13

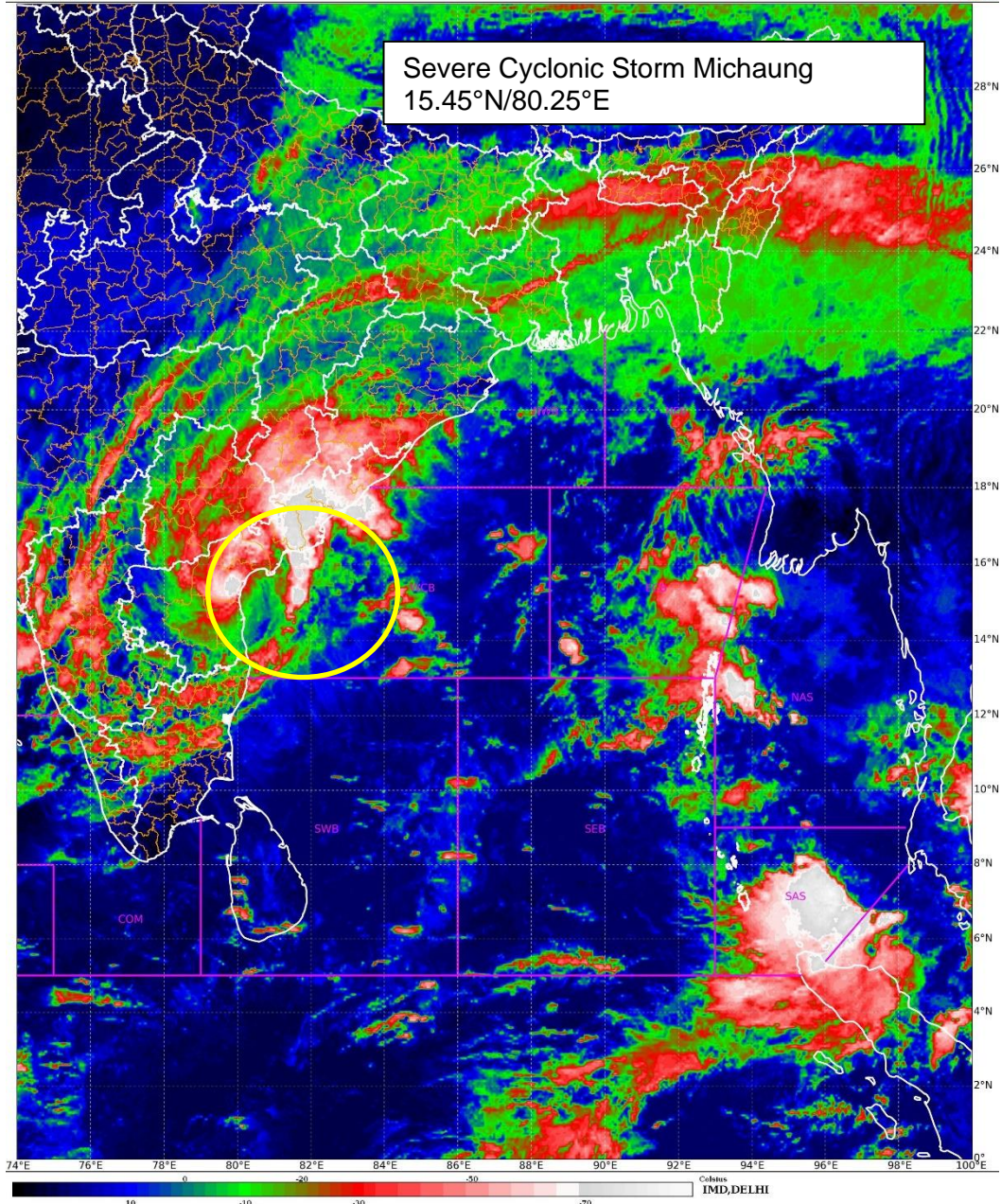
DATE: 05-12-2023

TIME OF ISSUE: 1230 HRS IST

DATE/TIME (IST) OF OBSERVATION	BASED ON 05-12-2023 (1130 HRS IST)
LOCATION LATITUDE/LONGITUDE	THE SEVERE CYCLONIC STORM "MICHAUNG" (PRONOUNCED AS MIGJAUM) OVER WESTCENTRAL BAY OF BENGAL ALONG AND OFF SOUTH ANDHRA PRADESH COAST MOVED NORTHWARDS WITH A SPEED OF 10 KMPH DURING PAST 06 HOURS AND LAY CENTERED AT 1130 HOURS IST OF 5TH DECEMBER, 2023 OVER THE SAME REGION NEAR LATITUDE 15.45°N AND LONGITUDE 80.25°E, ABOUT 20 KM EAST OF ONGOLE, 50 KM SOUTH-SOUTHWEST OF BAPATLA, 70 KM NORTH-NORTHEAST OF KAVALI, 110 KM NORTH-NORTHEAST OF NELLORE, AND 120 KM SOUTHWEST OF MACHILIPATNAM.
CURRENT INTENSITY NEAR CENTRE	90-100 KMPH GUSTING TO 110 KMPH.
PAST MOVEMENT	MOVED NORTHWARDS WITH A SPEED OF 10 KMPH DURING PAST 06 HOURS.
FORECAST MOVEMENT,	THE SYSTEM IS LIKELY TO MOVE NEARLY NORTHWARDS AND CROSS SOUTH ANDHRA PRADESH COAST CLOSE TO BAPATLA DURING NEXT 2 HOURS AS A SEVERE CYCLONIC STORM WITH A MAXIMUM SUSTAINED WIND SPEED OF 90-100 KMPH GUSTING TO 110 KMPH. LANDFALL PROCESS IS CONTINUING AND LIKELY TO CONTINUE FOR NEXT 3 HOURS.
OBSERVED RAINFALL FROM 0830 HRS IST (0300 UTC) OF 04 TH DEC TO 0830 HRS IST (0300 UTC) OF 05 TH DEC. (mm)	IMD OBSERVATORY BAPATLA - 222; NELLORE - 218.1; MACHILIPATNAM - 157; KAVALI - 145.1; TIRUPATHI AP - 126.9; ONGOLE - 118.2; KAKINADA - 82; GANNAVARAM - 70.6; NARSAPUR - 62.7; AMARAVATI - 47.2; TUNI - 26.6; KALINGAPATNAM - 24; KURNOOL - 8.8; AWS AGRO/ARG PODALAKUR - 214; REPALLE - 118; CHINNA_GANJAM - 79.5; DARSU_KVK - 73; KAKINADA - 73; UTKURU_KVK - 66; LAM_AMFU - 57; KALAVACHARLA_KVK - 56; NARSAPUR - 55; MEHADRIGADDA_DAM - 53; KV_GOPANNAPALEM_ELURU - 35.5; KAILASHGIRI - 35.5; ANKAPALLI_AMFU - 34.5; VENKATARAMANNAGUDEM_KVK - 34.5; PEDA_ARAVEEDU - 34.5; YELLAMANCHILLI_VSKP - 32.5; VIJAYARAI - 28; AROGYAVARAM - 22; PANDIRIMAMIDI_HRS - 21; GANGAVARAM_PORT - 20; GARIKAPADU_KVK - 19.5; CHITTOOR - 13; NARASARAOPET - 12.5; GOTTABARRIEGE - 10.5; PALAKONDA - 7.5.



Maximum Reflectivity from DWR Machilipatnam based on 0602 UTC of 05th December 2023



INSAT 3D Image based on 0530 UTC of 05th Dec 2023